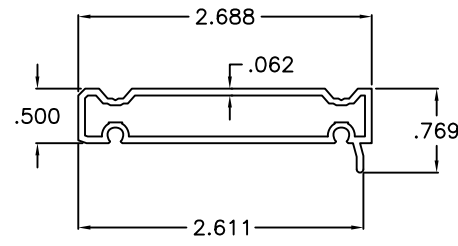
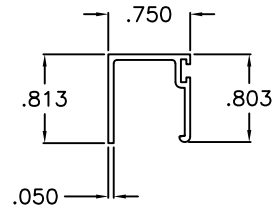


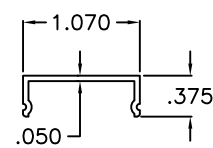
① FRAME HEAD/SILL/JAMB



⑦ FLUSH FRAME ADAPTER



② GLAZING BEAD



③ ANCHOR COVER

**ECO-GUARD SERIES-300
ALUMINUM FIXED WINDOW**

DESIGN LOAD RATINGS FOR THESE WINDOWS TO BE AS PER CHARTS SHOWN ON SHEET 2.

APPROVAL APPLIES TO SINGLE UNITS OR SIDE BY SIDE COMBINATIONS OF FIX./FIX. OR FIXED WITH OTHER WINDOW TYPES IN MODULES OF TWO OR MORE WINDOWS USING F.B.C. APPROVED MULLIONS IN BETWEEN. LOWER DESIGN PRESSURE FROM WINDOWS OR MULLION APPROVAL WILL APPLY TO ENTIRE SYSTEM.

THIS PRODUCT HAS BEEN DESIGNED AND TESTED TO COMPLY WITH THE REQUIREMENTS OF THE FLORIDA BUILDING CODE INCLUDING HIGH VELOCITY HURRICANE ZONE (HVHZ).

1BY OR 2BY WOOD BUCKS & BUCK FASTENERS BY OTHERS, MUST BE DESIGNED AND INSTALLED ADEQUATELY TO TRANSFER APPLIED PRODUCT LOADS TO THE BUILDING STRUCTURE

ANCHORS SHALL BE CORROSION RESISTANT, SPACED AS SHOWN ON DETAILS AND INSTALLED PER MANUF'S INSTRUCTIONS. SPECIFIED EMBEDMENT TO BASE MATERIAL SHALL BE BEYOND WALL DRESSING OR STUCCO.

A LOAD DURATION INCREASE IS USED IN DESIGN OF ANCHORS INTO WOOD ONLY.

ALL SHIMS TO BE HIGH IMPACT, NON-METALLIC AND NON-COMPRESSIBLE.

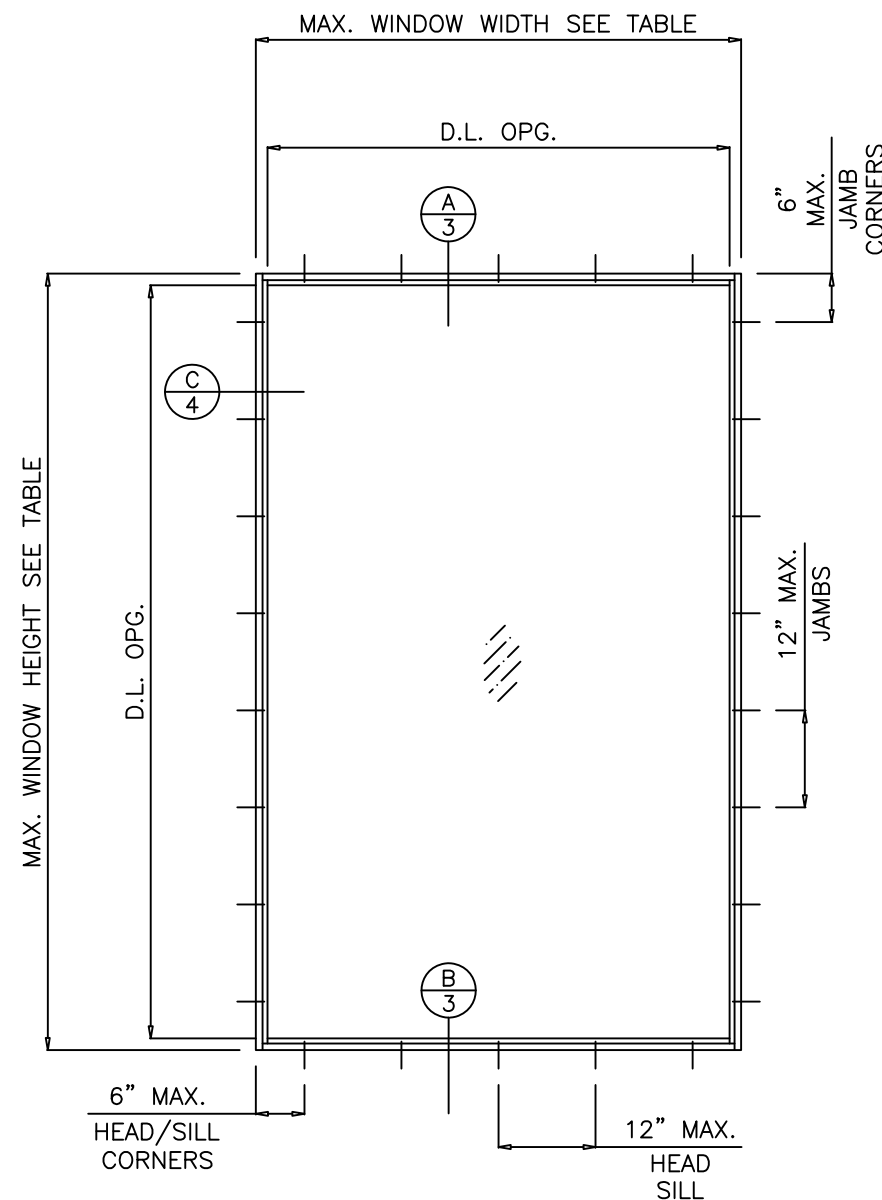
MATERIALS INCLUDING BUT NOT LIMITED TO STEEL/METAL SCREWS, THAT COME INTO CONTACT WITH OTHER DISSIMILAR MATERIALS SHALL MEET THE REQUIREMENTS OF THE FLORIDA BLDG. CODE & ADOPTED STANDARDS.

THIS PRODUCT APPROVAL IS GENERIC AND DOES NOT PROVIDE INFORMATION FOR A SITE SPECIFIC PROJECT, i.e. LIFE SAFETY OF THIS PRODUCT, ADEQUACY OF STRUCTURE RECEIVING THIS PRODUCT AND SEALING AROUND OPENING FOR WATER INFILTRATION RESISTANCE ETC. CONDITIONS NOT SHOWN IN THIS DRAWING ARE TO BE ANALYZED SEPARATELY, AND TO BE REVIEWED BY BUILDING OFFICIAL

DESIGN LOAD SHOWN ARE BASED ON 'ALLOWABLE STRESS DESIGN (ASD)'.

THESE WINDOWS ARE RATED FOR LARGE & SMALL MISSILE IMPACT. SHUTTERS ARE NOT REQUIRED.

ALL TEMPERED AND/OR LAMINATED GLASS OPTIONS IN THIS APPROVAL HAVE BEEN CERTIFIED BY THE SGCC FOR COMPLIANCE TO ANSI Z97.1, CLASS A AND CPSC 16 CFR 1201, CATEGORY II. THIS INCLUDES LAMINATED GLASS THAT IS MANUFACTURED WITH ANNEALED GLASS PLIES. FOR APPLICATIONS WHERE THE WINDOW IS BEING USED AS A GUARD, HEAT STRENGTHENED OR TEMPERED LAMINATED GLASS MUST BE USED.



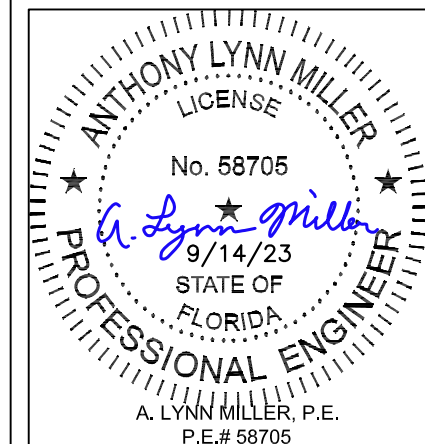
TYPICAL ELEVATION

GLASS D.L.O. DIMS.
D.L.O. HEIGHT = WINDOW HEIGHT - 3.625"
D.L.O. WIDTH = WINDOW WIDTH - 3.625"

Revision:

REVISED TABLE FORMAT.	ADDED DP TABLE ROUNDING.	ANSI Z97.1, AND ANCHOR HEAD TYPE NOTES, REMOVED SILICONE AND BACKSTOP ON INSTALL DETAIL
-----------------------	--------------------------	---

PREPARED BY A. LYNN MILLER 1070 TECHNOLOGY DRIVE N. VENICE, FL 34275 (941) 480-1600	REGISTRATION #29296	DATE	2/10/2022	REV.	A
	ECO-GUARD SERIES-300 ALUMINUM FIXED WINDOW (L.M.I.)	DRAWN BY	HONG C.	DWG NO.	PW300LM-FPA
ECO WINDOW SYSTEMS, LLC. 8502 N.W. 80th ST. MEDLEY, FL 33166 TEL: (305) 885-5299 FAX: (305) 885-5902	GENERAL INFORMATION, EXTRUSIONS & ELEVATIONS		SHEET	1 OF 5	SERIES 300



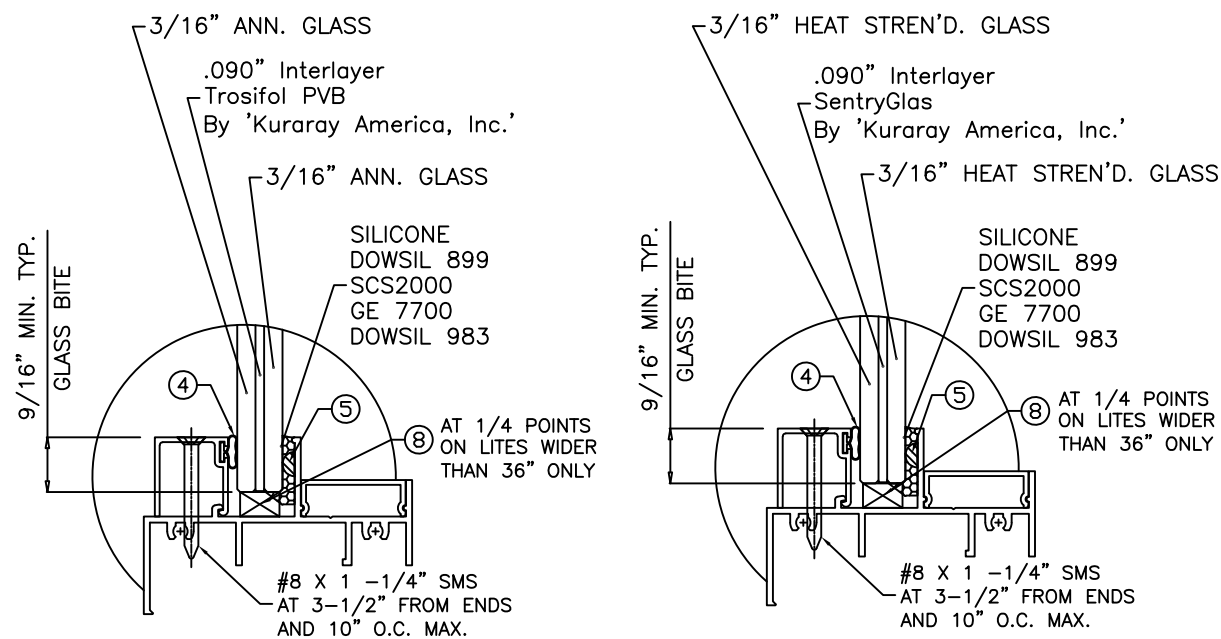
Design Load Capacity - PSF

Window Width (in.)	Glass Type	Window Length (in.)																											
		26"		36"		38-3/8"		48"		50-5/8"		60"		63"		72"		76"		84"		96"		108"		120"			
24"	C	+75.0	-80.0	+75.0	-80.0	+75.0	-80.0	+75.0	-80.0	+75.0	-80.0	+75.0	-80.0	+75.0	-80.0	+75.0	-80.0	+75.0	-80.0	+75.0	-80.0	+75.0	-80.0	+75.0	-80.0	+75.0	-80.0		
	D	+80.0	-90.0	+80.0	-90.0	+80.0	-90.0	+80.0	-90.0	+80.0	-90.0	+80.0	-90.0	+80.0	-90.0	+80.0	-90.0	+80.0	-90.0	+80.0	-90.0	+80.0	-90.0	+80.0	-90.0	+80.0	-90.0		
26-1/2"	C	+75.0	-80.0	+75.0	-80.0	+75.0	-80.0	+75.0	-80.0	+75.0	-80.0	+75.0	-80.0	+75.0	-80.0	+75.0	-80.0	+75.0	-80.0	+75.0	-80.0	+75.0	-80.0	+75.0	-80.0	+75.0	-80.0		
	D	+80.0	-90.0	+80.0	-90.0	+80.0	-90.0	+80.0	-90.0	+80.0	-90.0	+80.0	-90.0	+80.0	-90.0	+80.0	-90.0	+80.0	-90.0	+80.0	-90.0	+80.0	-90.0	+80.0	-90.0	+80.0	-90.0		
30"	C	+75.0	-80.0	+75.0	-80.0	+75.0	-80.0	+75.0	-80.0	+75.0	-80.0	+75.0	-80.0	+75.0	-80.0	+75.0	-80.0	+75.0	-80.0	+75.0	-80.0	+75.0	-80.0	+75.0	-80.0	+75.0	-80.0		
	D	+80.0	-90.0	+80.0	-90.0	+80.0	-90.0	+80.0	-90.0	+80.0	-90.0	+80.0	-90.0	+80.0	-90.0	+80.0	-90.0	+80.0	-90.0	+80.0	-90.0	+80.0	-90.0	+80.0	-90.0	+80.0	-90.0		
36"	C	+75.0	-80.0	+75.0	-80.0	+75.0	-80.0	+75.0	-80.0	+75.0	-80.0	+75.0	-80.0	+75.0	-80.0	+75.0	-80.0	+75.0	-80.0	+75.0	-80.0	+75.0	-76.2	+74.5	-74.5	+74.5	-74.5		
	D	+80.0	-90.0	+80.0	-90.0	+80.0	-90.0	+80.0	-90.0	+80.0	-90.0	+80.0	-90.0	+80.0	-90.0	+80.0	-90.0	+80.0	-90.0	+80.0	-90.0	+80.0	-90.0	+80.0	-90.0	+80.0	-90.0		
37"	C	+75.0	-80.0	+75.0	-80.0	+75.0	-80.0	+75.0	-80.0	+75.0	-80.0	+75.0	-80.0	+75.0	-80.0	+75.0	-80.0	+75.0	-80.0	+70.0	-70.0	+64.6	-64.6	+61.5	-61.5				
	D	+80.0	-90.0	+80.0	-90.0	+80.0	-90.0	+80.0	-90.0	+80.0	-90.0	+80.0	-90.0	+80.0	-90.0	+80.0	-90.0	+80.0	-90.0	+80.0	-90.0	+80.0	-90.0	+80.0	-90.0				
42"	C	+75.0	-80.0	+75.0	-80.0	+75.0	-80.0	+75.0	-80.0	+75.0	-80.0	+75.0	-80.0	+75.0	-80.0	+70.0	-70.0	+70.0	-70.0	+64.6	-64.6	+61.5	-61.5						
	D	+80.0	-90.0	+80.0	-90.0	+80.0	-90.0	+80.0	-90.0	+80.0	-90.0	+80.0	-90.0	+80.0	-90.0	+80.0	-90.0	+80.0	-90.0	+80.0	-90.0	+80.0	-90.0	+80.0	-90.0				
48"	C	+75.0	-80.0	+75.0	-80.0	+75.0	-80.0	+75.0	-80.0	+75.0	-80.0	+75.0	-80.0	+75.0	-76.6	+75.0	-76.6	+67.9	-69.9	+65.6	-65.6	+59.9	-59.9						
	D	+80.0	-90.0	+80.0	-90.0	+80.0	-90.0	+80.0	-90.0	+80.0	-90.0	+80.0	-90.0	+80.0	-90.0	+80.0	-90.0	+80.0	-90.0	+80.0	-90.0	+80.0	-90.0	+80.0	-90.0				
53-1/8"	C	+75.0	-80.0	+75.0	-80.0	+75.0	-80.0	+75.0	-80.0	+71.3	-76.0	+67.9	-72.5	+67.9	-72.5	+67.9	-69.9	+67.9	-69.9	+64.3	-64.3								
	D	+80.0	-90.0	+80.0	-90.0	+80.0	-90.0	+80.0	-90.0	+80.0	-90.0	+80.0	-90.0	+80.0	-90.0	+80.0	-90.0	+80.0	-90.0	+80.0	-90.0	+80.0	-90.0	+80.0	-90.0				
54"	C	+75.0	-80.0	+75.0	-80.0	+75.0	-80.0	+75.0	-80.0	+71.3	-73.1	+66.8	-71.3	+66.8	-71.3	+66.8	-71.3	+64.3	-64.3	+64.3	-64.3								
	D	+80.0	-90.0	+80.0	-90.0	+80.0	-90.0	+80.0	-90.0	+80.0	-90.0	+80.0	-90.0	+80.0	-90.0	+80.0	-90.0	+80.0	-90.0	+80.0	-90.0	+80.0	-90.0	+80.0	-90.0				
60"	C	+75.0	-80.0	+75.0	-80.0	+75.0	-80.0	+75.0	-80.0	+71.3	-73.1	+60.2	-64.2	+60.2	-64.2	+60.2	-64.2												
	D	+80.0	-90.0	+80.0	-90.0	+80.0	-90.0	+80.0	-90.0	+80.0	-90.0	+80.0	-90.0	+80.0	-90.0	+80.0	-90.0												
66"	C	+75.0	-80.0	+75.0	-80.0	+75.0	-80.0	+75.0	-80.0	+71.3	-73.1	+60.2	-64.2																
	D	+80.0	-90.0	+80.0	-90.0	+80.0	-90.0	+80.0	-90.0	+80.0	-90.0	+80.0	-90.0																
72"	C	+75.0	-80.0	+75.0	-80.0	+75.0	-80.0	+75.0	-76.6	+71.3	-73.1	+60.2	-64.2																
	D	+80.0	-90.0	+80.0	-90.0	+80.0	-90.0	+80.0	-90.0	+80.0	-90.0	+80.0	-90.0																
74"	C	+75.0	-80.0	+75.0	-80.0	+75.0	-80.0	+71.3	-73.1	+71.3	-73.1																		
	D	+80.0	-90.0	+80.0	-90.0	+80.0	-90.0	+80.0	-90.0	+80.0	-90.0																		

FOR SIZES NOT SHOWN, ROUND UP TO THE NEXT AVAILABLE WIDTH OR LENGTH DIMENSION SHOWN ON THE TABLE.

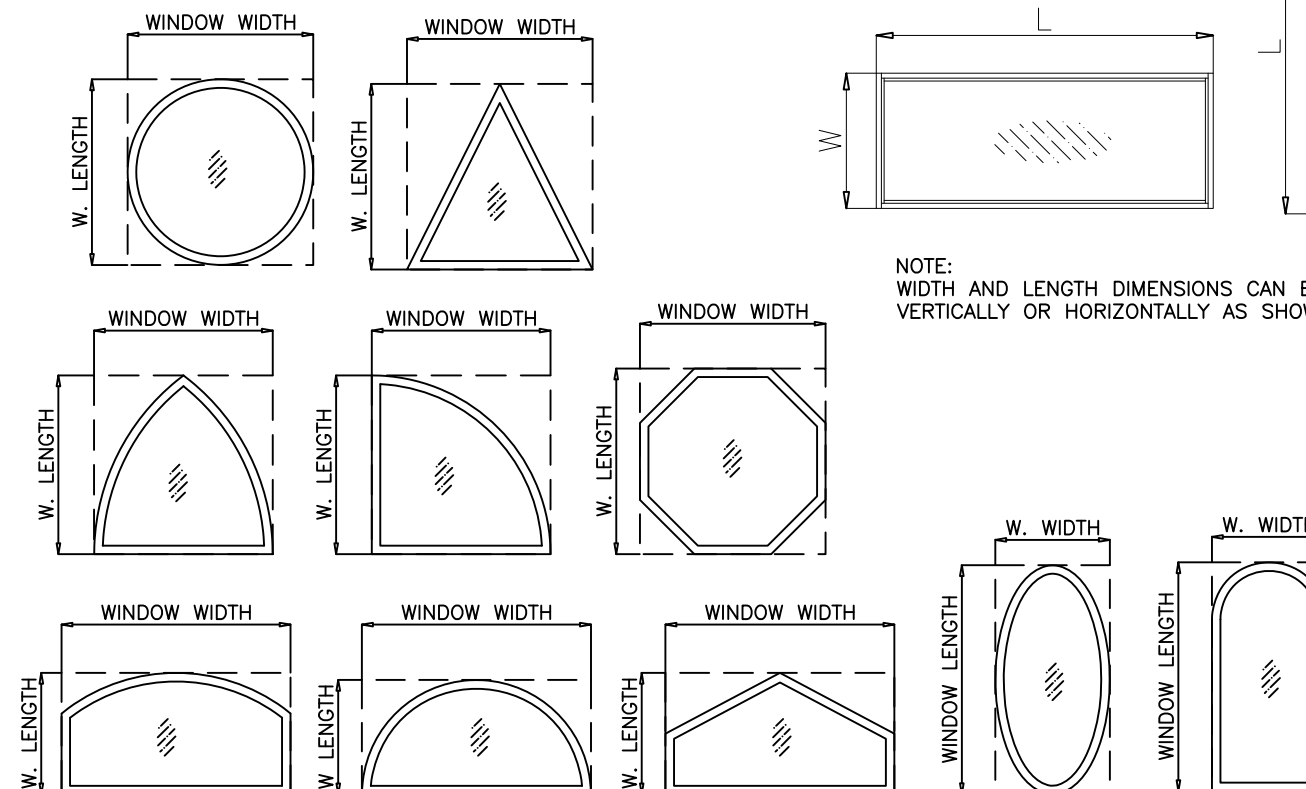
Revision:
 REVISED TABLE FORMAT.
 ADDED DP TABLE ROUNDING, ANSI Z97.1, AND ANCHOR HEAD TYPE NOTES, REMOVED SILICONE AND BACKSTOP ON INSTALL DETAIL

PREPARED BY A. LYNN MILLER 1070 TECHNOLOGY DRIVE N. VENICE, FL 34275 (941) 480-1600	REGISTRATION #29296	2/10/2022	HONG C. PW300LM-FPA	A
	ECO WINDOW SYSTEMS, LLC. 8502 N.W. 80th ST., MEDLEY, FL 33166 TEL: (305) 885-5299 FAX: (305) 885-5902	ECO-GUARD SERIES-300 ALUMINUM FIXED WINDOW (L.M.I.)		
window systems DESIGN LOADS & GLASS TYPES		Series Desc.	Sheet 2 OF 5	DWG No. 2 OF 5

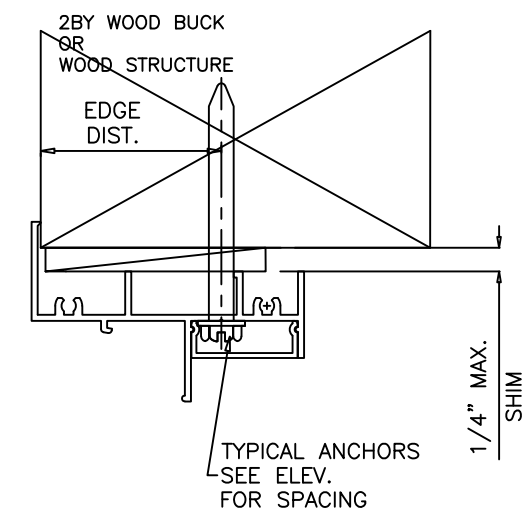
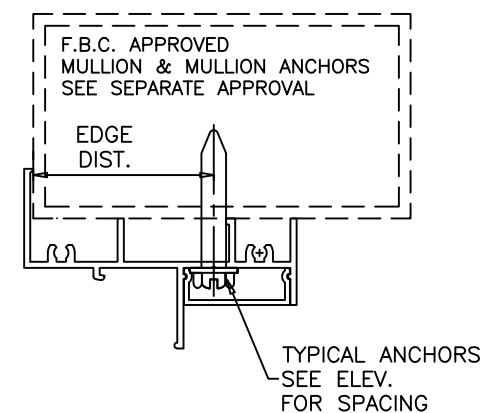
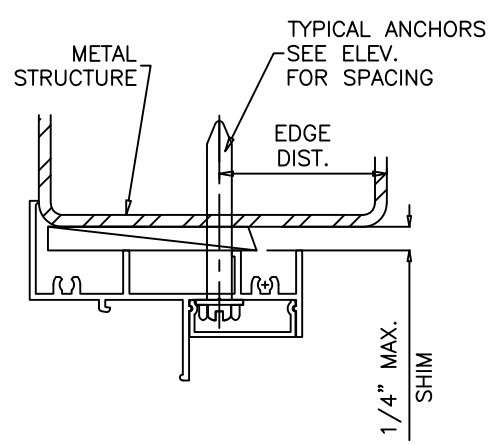
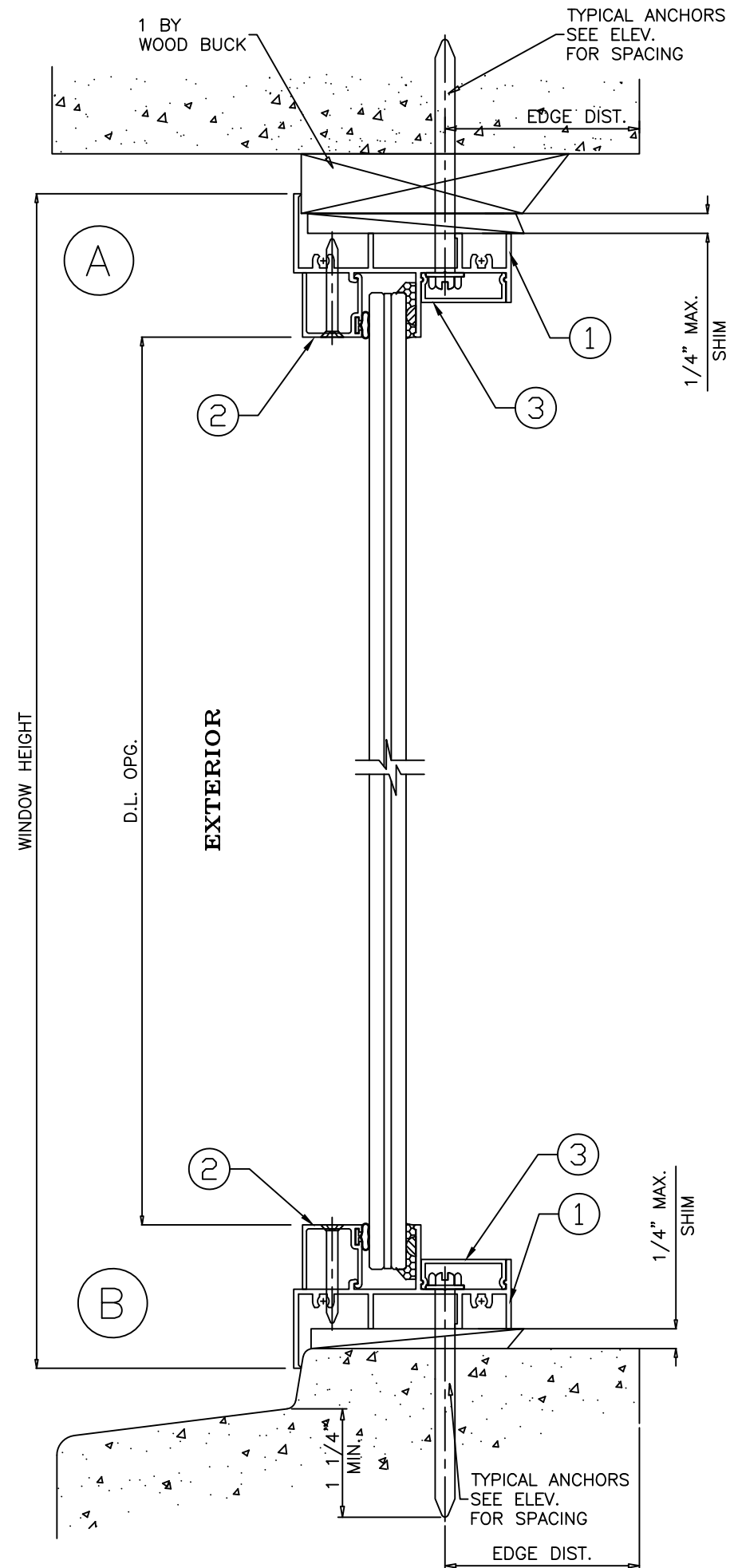


GLAZING OPTIONS

NOTE:
 GLASS CAPACITIES ON THIS SHEET ARE BASED ON ASTM E1300-09 (3 SEC. GUSTS)



ALLOWABLE LOADS FOR ALTERNATE SHAPES AS SHOWN ABOVE OR SIMILAR CAN BE VERIFIED BY INSCRIBING PICTURE WINDOW SHAPE WITHIN SQUARE OR RECTANGLE AS SHOWN IN DOTTED LINES AND OBTAINING ALLOWABLE LOADS FROM THOSE SHAPES.

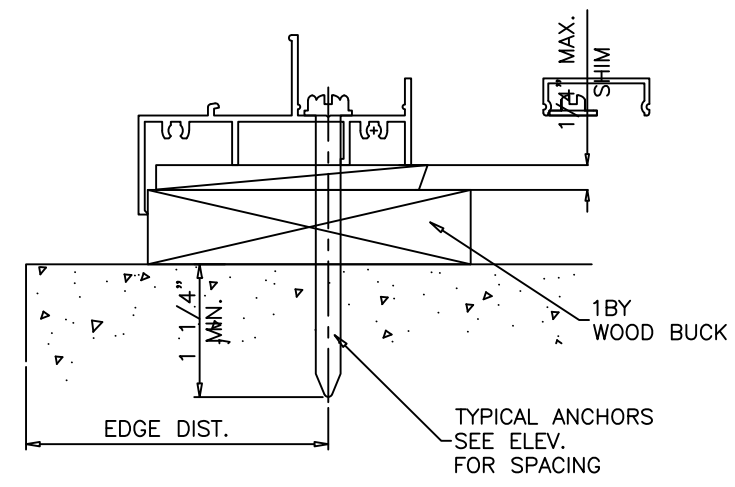


WOOD BUCKS AND METAL STRUCTURE NOT BY 'ECO WDW.' MUST SUSTAIN LOADS IMPOSED BY GLAZING SYSTEM AND TRANSFER THEM TO THE BUILDING STRUCTURE.

TYPICAL ANCHORS: SEE ELEV. FOR SPACING

Anchor Type	Frame Member	Substrate	Min. Edge Distance	Min. Embedment or Metal Thickness
1/4" DeWalt UltraCon +	All	Southern Pine (SG = 0.55)	1"	1-1/2"
	All	Thru 1BY Buck into Concrete (min. 3 ksi)	2-1/2"	1-1/4"
	Jambs	Thru 1BY Buck into Hollow or Filled Block (ASTM C90, min. 2 ksi)	2-1/2"	1-1/4"
	All	Concrete (min. 3ksi)	2-1/2"	1-1/4"
	Jambs	Hollow or Filled Block (ASTM C90, min. 2 ksi)	2-1/2"	1-1/4"
#14 SMS or Self Drilling Screws (Gr. 2)	All	F.B.C Approved Mullions	3/4"	(3) Threads min. beyond metal thickness
	All	Aluminum 1/8" Thk. Min. (6063-T5)	3/4"	(3) Threads min. beyond metal thickness
	All	Steel 1/8" Thk. Min. (min. 36 ksi)	3/4"	(3) Threads min. beyond metal thickness

1. STEEL IN CONTACT WITH ALUMINUM TO BE PLATED OR PAINTED
2. ALL ANCHOR HEAD TYPES ARE ACCEPTABLE



SEALANT:
ALL JOINT AND FRAME CONNECTIONS SEALED WITH JOINT SEALER.

Revision:
REVISED TABLE FORMAT.
ADDED DP TABLE ROUNDING.
ANSI Z97.1, AND ANCHOR HEAD TYPE NOTES, REMOVED SILICONE AND BACKSTOP ON INSTALL DETAIL

PREPARED BY A. LYNN MILLER
1070 TECHNOLOGY DRIVE
N. VENICE, FL 34275
(941) 480-1600

REGISTRATION #29296

ECO WINDOW SYSTEMS, LLC.
8602 N.W. 80th ST. MEDLEY, FL 33166
TEL: (305) 885-5299 FAX: (305) 885-5902

ECO-GUARD SERIES-300 ALUMINUM FIXED WINDOW (L.M.I.)

2/10/2022

HONG C.

PW300LM-FPA

3 OF 5

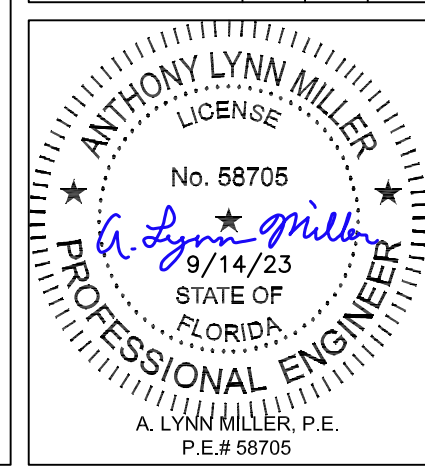
SERIES 300

VERTICAL SECTION DETAILS & ANCHORS

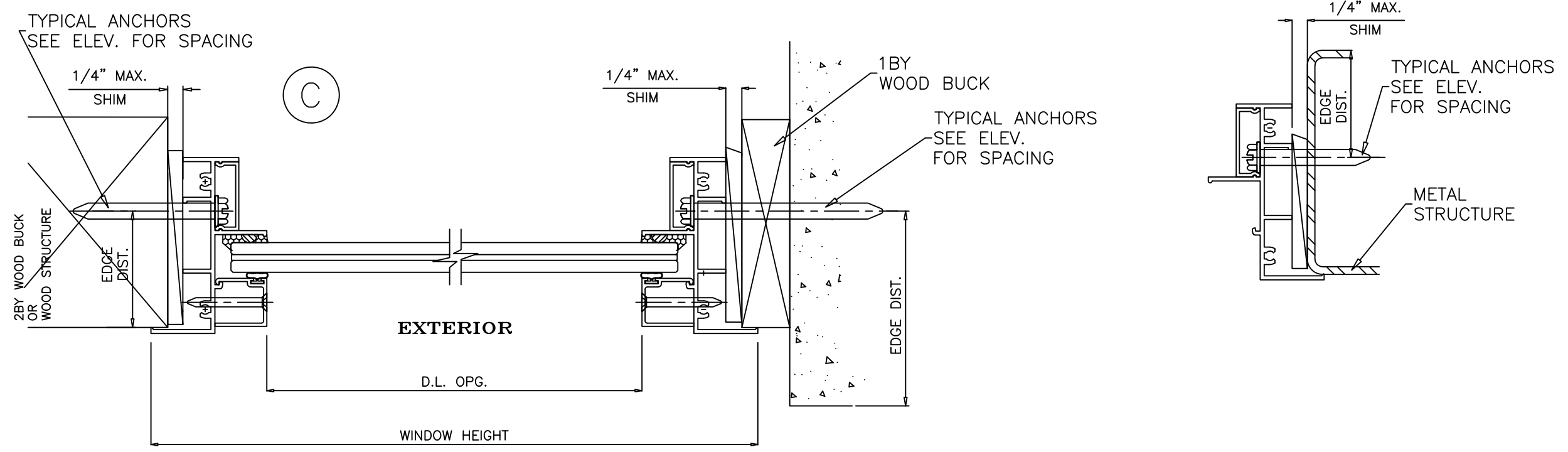
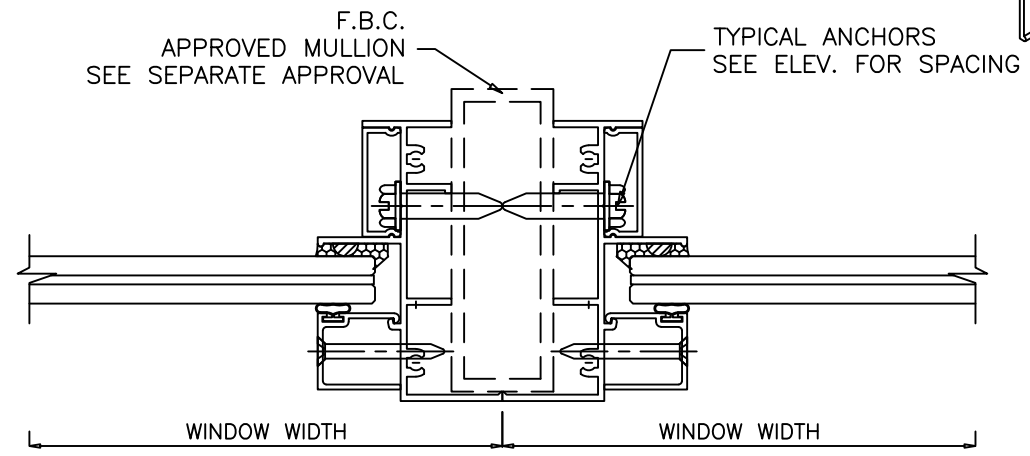
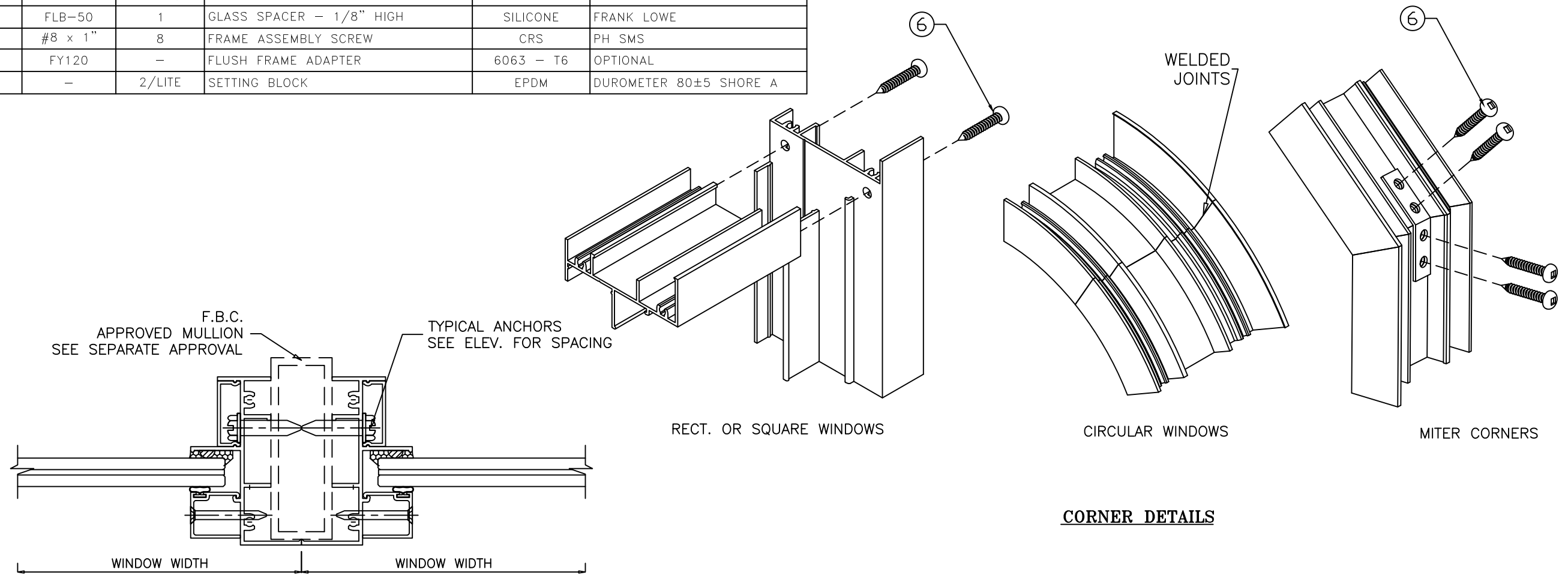
Sheet

DWG No.

Rev. A

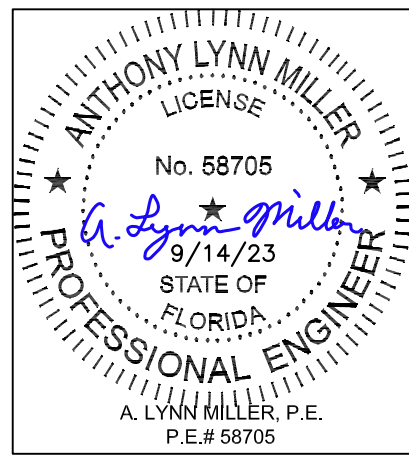


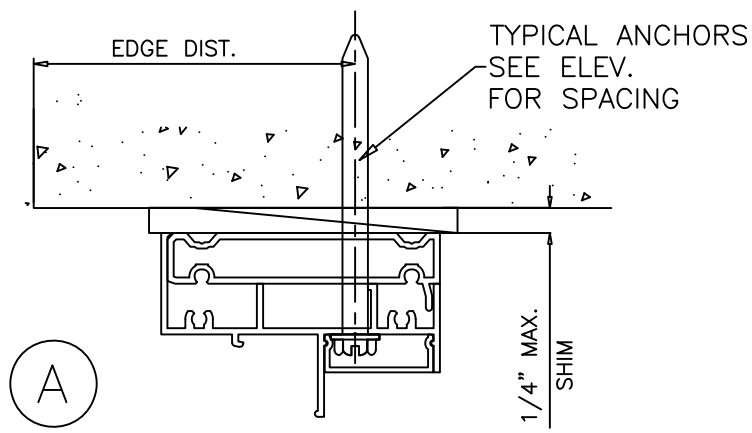
ITEM #	PART #	QUANTITY	DESCRIPTION	MATERIAL	MANF./SUPPLIER/REMARKS
1	FY301	2	FRAME HEAD/SILL/JAMB	6063 - T6	-
2	FY302	AS REQD.	GLAZING BEAD - 7/16" GLASS	6063 - T6	-
3	FY303	AS REQD.	ANCHOR COVER	6063 - T5	-
4	E203	AS REQD.	GLAZING BEAD BULB	NEOPRENE	ULTRAFAB
5	FLB-50	1	GLASS SPACER - 1/8" HIGH	SILICONE	FRANK LOWE
6	#8 x 1"	8	FRAME ASSEMBLY SCREW	CRS	PH SMS
7	FY120	-	FLUSH FRAME ADAPTER	6063 - T6	OPTIONAL
8	-	2/LITE	SETTING BLOCK	EPDM	DUROMETER 80±5 SHORE A



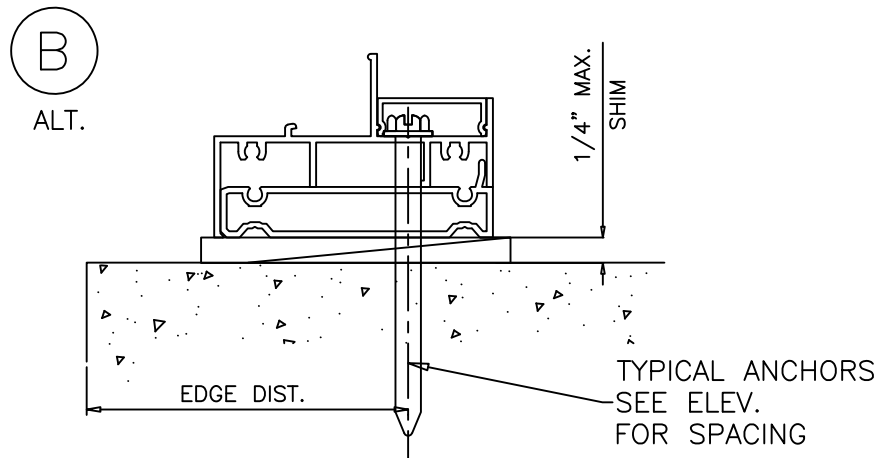
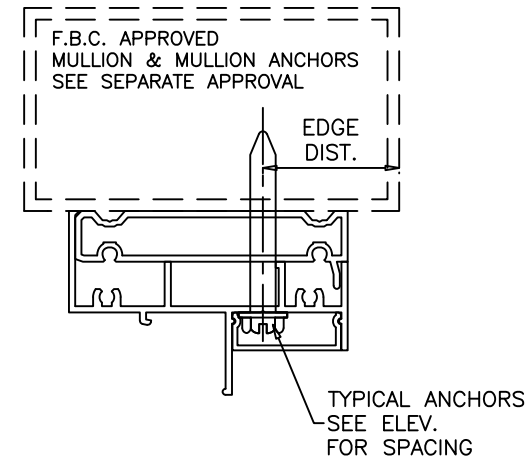
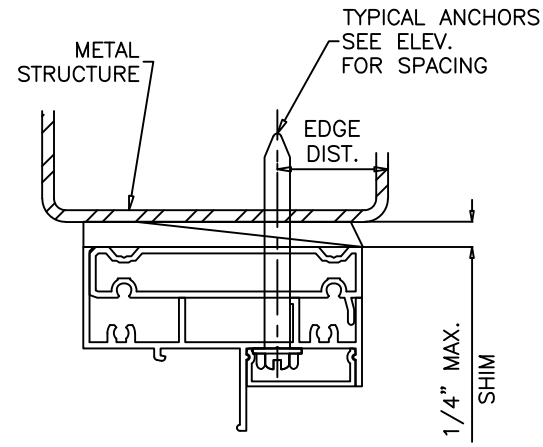
Revision:
 REVISED TABLE
 FORMAT.
 ADDED DP
 TABLE
 ROUNDING,
 ANSI Z97.1, AND
 ANCHOR HEAD
 TYPE NOTES,
 REMOVED
 SILICONE AND
 BACKSTOP ON
 INSTALL DETAIL

PREPARED BY A. LYNN MILLER 1070 TECHNOLOGY DRIVE N. VENICE, FL 34275 (941) 480-1600	REGISTRATION #29296	Date	2/10/2022	Rev.	A
	ECO WINDOW SYSTEMS, LLC. 8502 N.W. 80th ST. MEDLEY, FL 33166 TEL: (305) 885-5299 FAX: (305) 885-5902	By	HONG C.	DWG	PW300LM-FPA
ECO-GUARD SERIES-300 ALUMINUM FIXED WINDOW (L.M.I.)	Series	Series 300	4 OF 5	Sheet	
HORIZONTAL SECTION DETAILS, CORNER DETAILS & BOM	Desc.				

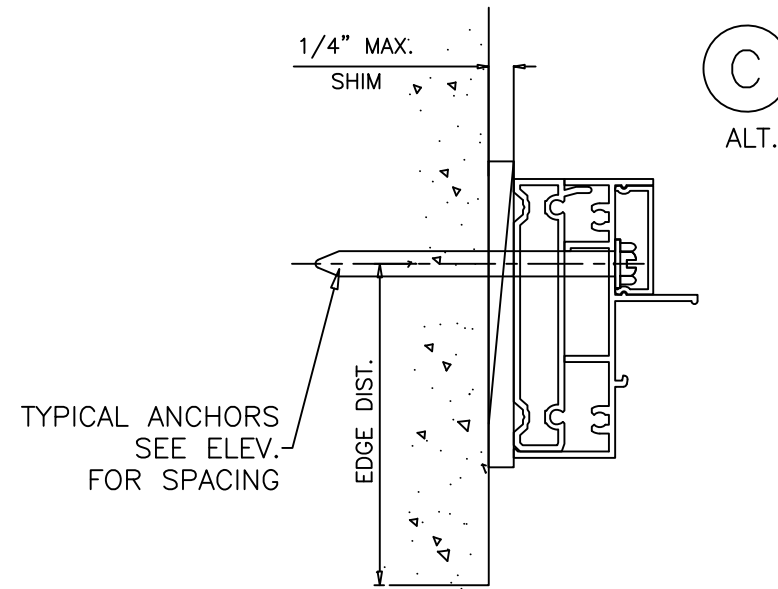




A
ALT.



B
ALT.



C
ALT.

INSTALLATION DETAILS WITH FLUSH FRAME ADAPTER

Revision:
REVISED TABLE
FORMAT.
ADDED DP
TABLE
ROUNDING,
ANSI Z97.1, AND
ANCHOR HEAD
TYPE NOTES,
REMOVED
SILICONE AND
BACKSTOP ON
INSTALL DETAIL

PREPARED BY A. LYNN MILLER 1070 TECHNOLOGY DRIVE N. VENICE, FL 34275 (941) 480-1600 REGISTRATION #29296	Date	2/10/2022	Rev.	A
	By	HONG C.	DWG No.	PW300LM-FPA
ECO window systems ECO WINDOW SYSTEMS, LLC. 8502 N.W. 80th ST. MEDLEY, FL 33166 TEL: (305) 885-5299 FAX: (305) 885-5902	Title	ECO-GUARD SERIES-300 ALUMINUM FIXED WINDOW (L.M.I.)	Sheet	5 OF 5
FLUSH FRAME ADAPTER INSTALLATION DETAIL	Series	SERIES 300	DWG No.	PW300LM-FPA

